

**Galileo ARO Telephone Number Application
Installation Guide**

Version 10.0.0

Release date: 19th March 2010

Copyright

Copyright © 1999-2000 Galileo International. All rights reserved.

Information in this document is subject to change without notice. The software described in this document is furnished under a licence agreement or nondisclosure agreement. The software may be used or copied only in accordance with the terms of those agreements. No part of this publication may be reproduced, stored in a retrieval system, or transmitted in any form or any means electronic or mechanical, including photocopying and recording for any purpose other than the purchaser's personal use without the written permission of Galileo International.

Trademarks

Galileo International may have patents or pending patent applications, trademarks copyrights, or other intellectual property rights covering subject matter in this document. The furnishing of this document does not give you any licence to these patents, trademarks, copyrights, or other intellectual property rights except as expressly provided in any written licence agreement from Galileo.

All other companies and product names are trademarks or registered trademarks of their respective holders.

Table of Contents

1	Introduction	4
1.1	Purpose of the Document	4
1.2	Scope	4
1.3	ARO Functionality	4
2	Installation Steps	5
2.1	Pre-requisites	5
2.2	Checking of Galileo Desktop	5
2.3	Select Program Features Dialog Box	6
2.4	Copying the Files	7
2.5	Finish	9

1 Introduction

1.1 Purpose of the Document

This document is the solution proposal for Airline Reservation Office (ARO) Script. It describes the steps involved to install the script in detail.

1.2 Scope

The scope for this document limits to the ARO Script only.

1.3 ARO Functionality

Airline reservation office information will be added under each air/open air segment as associated remark automatically. There are 2 ways to execute the script:

1) via clicking Custom Toolbar icon

Agent clicks on ARO Custom Viewpoint icon and the script starts running after validation of required information in PNR. After the process is completed, RI remark is generated with respect to each segment and is saved.

2) via inputting cryptic command of 'Print itinerary' and 'Print ticket' in FocalPoint

Print itinerary - TKP (first 3 characters) + DID (3 characters right after TKP or in the middle of string) plus any things'

Print ticket - TKP (first 3 characters) + DTD (3 characters right after TKP or in the middle of string) plus any things'

When agent types either one of above host commands on Focal Point, the script starts running. After the process is completed, host will process the Print itinerary or Print ticket command.

Finally, an itinerary with RI remarks is generated or a ticket is issued and RI remarks are saved.

2 Installation Steps

The Install Shield Developer 8 creates a setup file of ARO script. Double click on this executable (exe) file to start the installation process.

2.1 Pre-requisites

The following software has to be installed on the computer before installation.

- Galileo Desktop Version 2.0 or above
- Windows® 2000 SP3, Windows® NT Service Pack 6a, Windows® Me and Windows® XP or Higher.
- Microsoft® Internet Explorer 6.0 or Higher

2.2 Checking of Galileo Desktop

When user executes the install shield exe file, there are some predefined validations like:

Install Shield first checks whether Galileo Desktop Version 2.x has installed or not. If Galileo Desktop 2.x has not installed on the system, it will prompt a message to user (Figure 1) and terminates the setup.

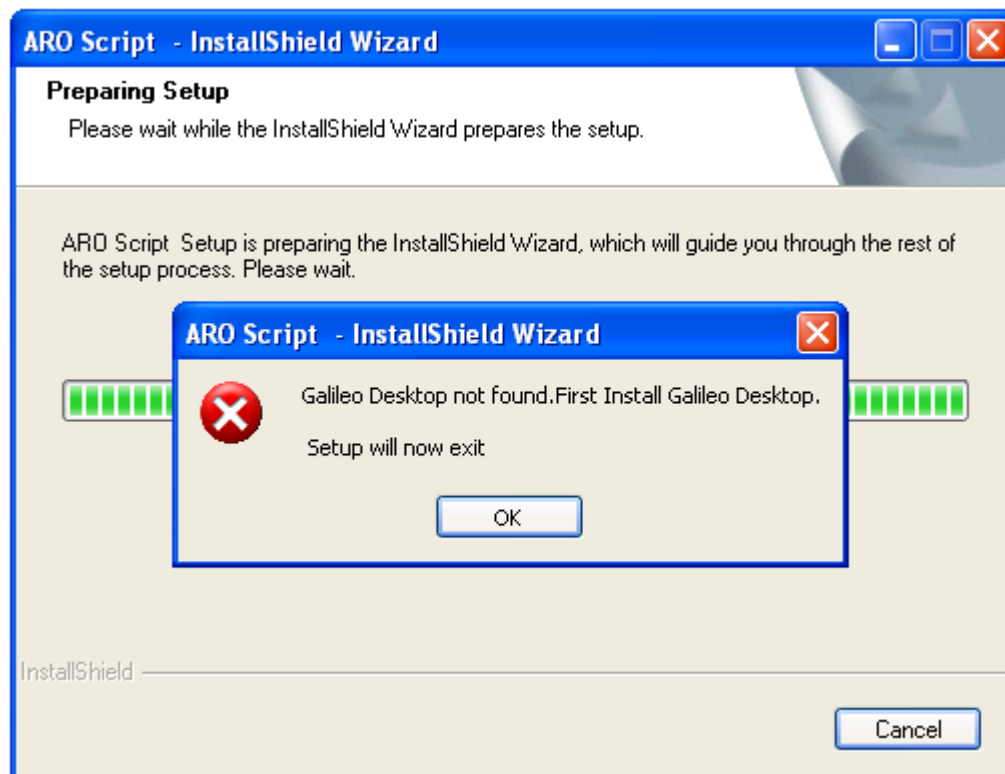


Figure 1

2.3 Select Program Features Dialog Box

When select program features dialog box appears (Figure 2), user has to select either one or both features.

By default, “Insert ARO via clicking Custom Viewpoint Toolbar icon” is selected but the selection can be cancelled by unclick the check box.

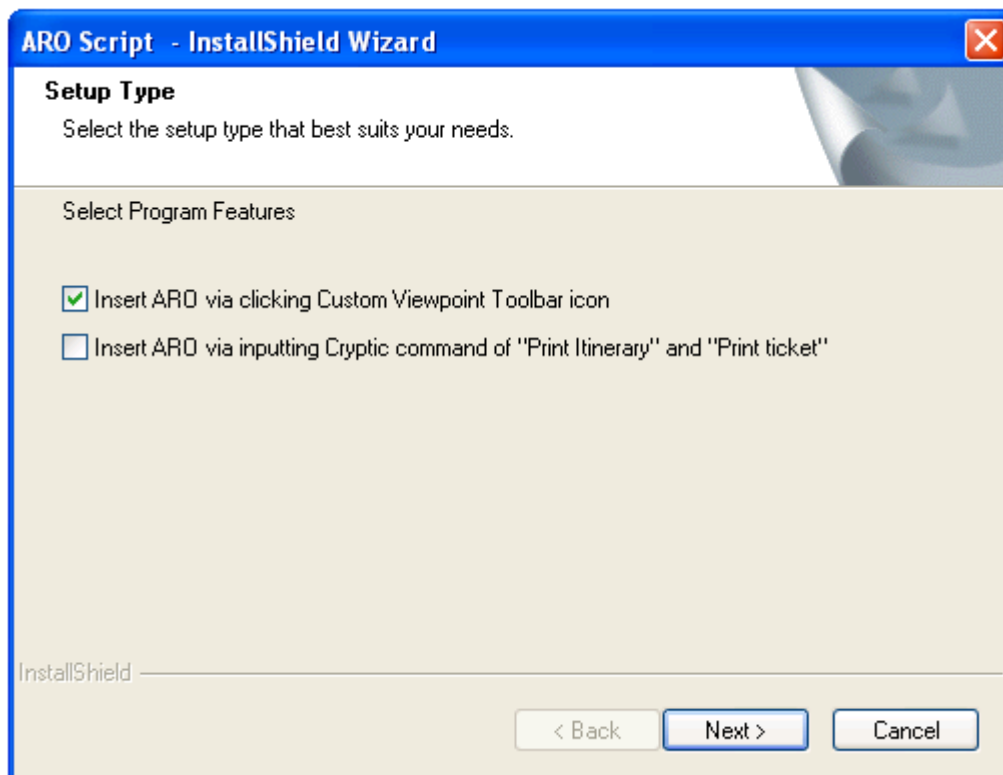


Figure 2

If user does not select any options and clicks on “Next” button, installer will display the following dialog box (Figure 3). When user clicks on “OK” button, select program features dialog box will be displayed (Figure 2).



Figure 3

2.4 Copying the Files

After user selects program feature(s) and clicks on “OK” button (Figure 2), installer will copy the related files on specific location:

1) **Selects 1st option only - via clicking Custom Viewpoint Toolbar icon**

If user selects this option and clicks on “Next” button, installer copies all related files on location <Drive Letter>\fp\swdir \CustomViewpoint\ARO (Figure 4).

Simultaneously, an icon will be added on Custom Viewpoint Toolbar. By default, installer searches the vptoolbar.xml file in <Drive Letter>\fp\swdir folder & subfolders.

- a. If vptoolbar.xml file is found and ARO script is not available, a new entry for ARO button is appended and it adds required Tag to the end of vptoolbar.xml file.
- b. If vptoolbar.xml file is not found, installer should create the vptoolbar.xml file under <Drive Letter>/FP/SWDIR folder only.

2) **Selects 2nd option only - via inputting cryptic command of “Print Itinerary” and “Print ticket”:**

If user selects this option and clicks on “Next” button, installer copies all files related on the specified location <Drive Letter>\fp\swdir\CustomViewpoint\ARO and on <Drive Letter>\fp\swdir \CustomViewpoint\LocalScripts\GDAUDIT\features too (Figure 4).

3) **Selects 1st and 2nd options**

Installer copies all related files on the specific location <Drive Letter>\fp\swdir\CustomViewpoint\ARO and <Drive Letter>\fp\swdir\CustomViewpoint\LocalScripts\GDAUDIT\features respectively (Figure 4).

An icon will be added on Custom Viewpoint Toolbar. By default, installer searches the vptoolbar.xml file in <Drive Letter>\fp\swdir folder & subfolders and if this file found then installer do the following steps:

- a. If vptoolbar.xml file is found and ARO script is not available, a new entry for ARO button is appended and it adds required Tag to the end of vptoolbar.xml file.
- b. If vptoolbar.xml file is not found, installer should create the vptoolbar.xml file under <Drive Letter>/FP/SWDIR folder only.

Then, the script will be run by clicking Custom Viewpoint Toolbar icon and by inputting cryptic command of “Print itinerary” and “Print ticket”.

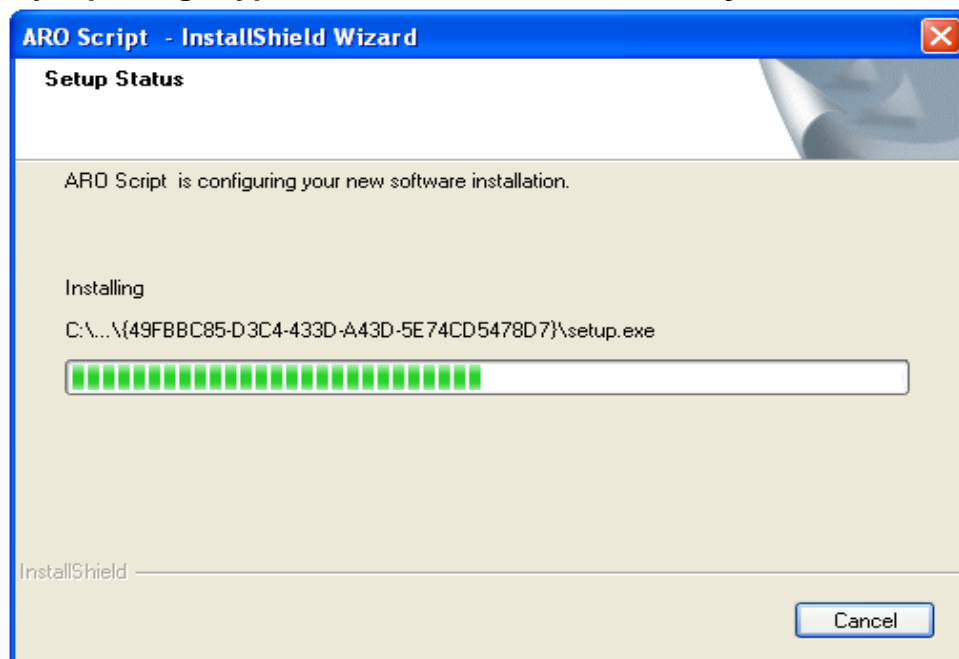


Figure 4

2.5 Finish

This is the confirmation screen when the setup has finished successfully on your computer.

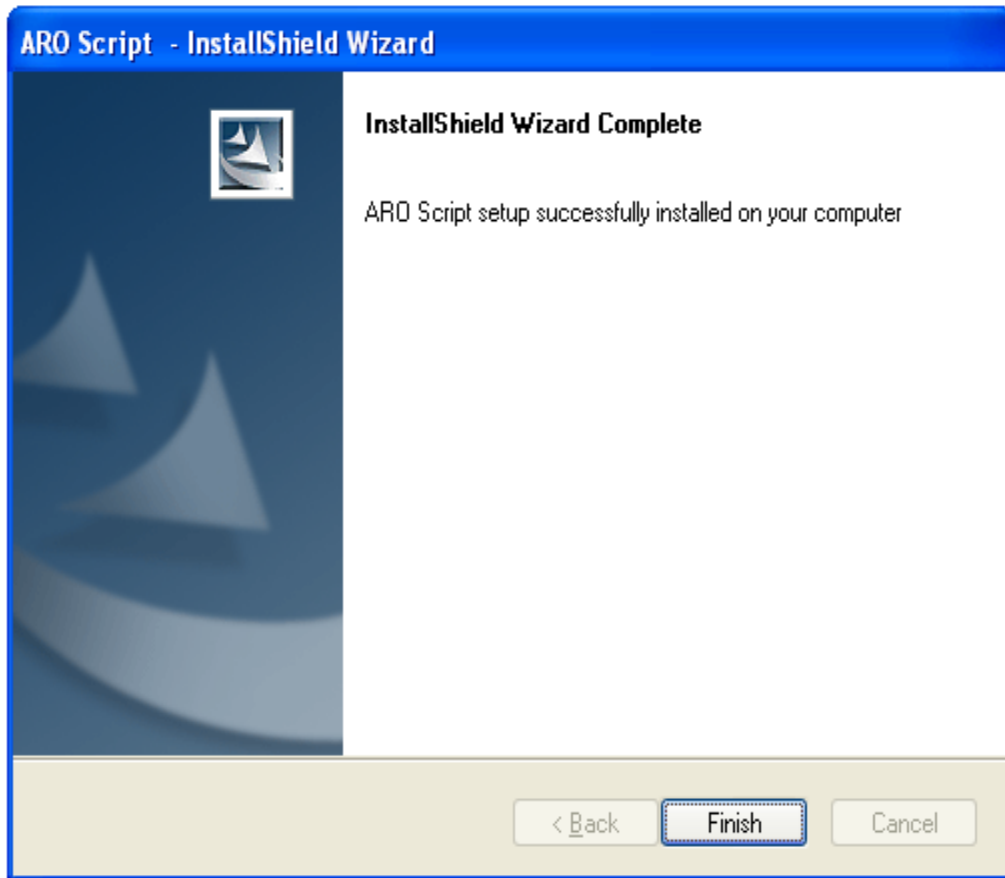


Figure 5